

# THE PH.D. EXPERIENCE: EXPECTATIONS & REALITIES

## Agenda

**Dr. Lawrence Morehouse**, President & CEO, Presiding

*To assist you in finding meeting rooms, we include a map of the Marriott Tampa Airport Hotel below.*

### **Friday, June 14, 2013**

1:00-5:00 p.m. ~ *Grand Ballroom West Foyer*

♦ **Registration**

2:00-3:50 p.m. ~ *Grand Ballroom West*

♦ **Opening Session**

*Welcome and Purpose*

- *Dr. Lawrence Morehouse*

*The MDF Profile: 2013-2014 Class Portraits*

- *Mr. Charles Jackson*, MDF Program Manager

4:00-5:00 p.m. ~ *Grand Ballroom West*

♦ **Session I: Strategies for Navigating the Ph.D. Process: Expectations and Realities**

This session surveys key academic and psycho-social requirements to successfully navigate a Ph.D. program. By examining the unique nature of doctoral studies, personal learning styles, coping mechanisms, and skill sets, and the span of the doctoral commitment, students will leave the session empowered to create their own “Strategies for Navigating the Ph.D. Process.” The discussion will include information related to analytical note-taking; maintaining mental health, a strong work-ethic, and commitment; and the process of creating knowledge.

- *Dr. Dovie Gamble*, Professor, Department of Tourism, Recreation & Sports Management, University of Florida



6:00-8:30 p.m. ~ *Grand Ballroom East*

**McKnight Reception**

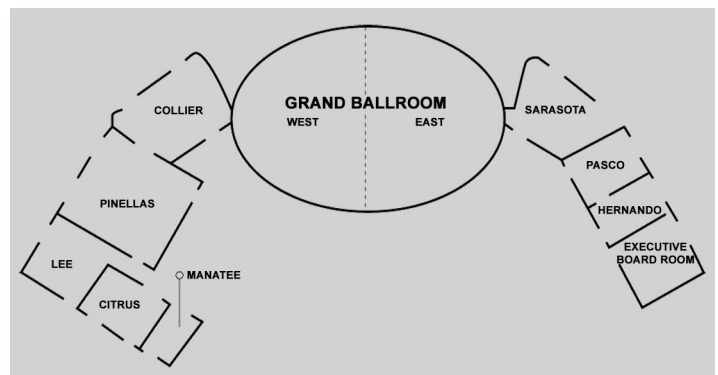
*Dinner*

*Entertainment: Ms. Clara Fernandez*, Classical Guitarist

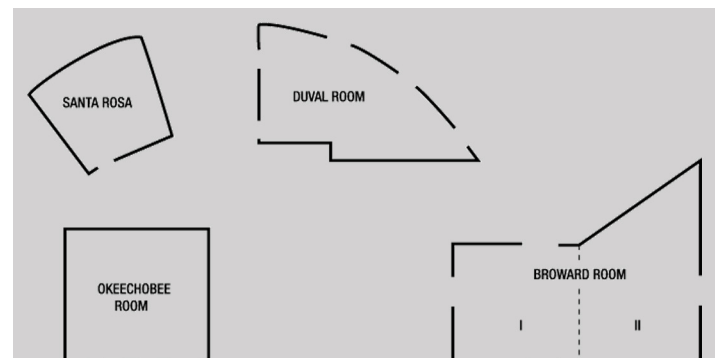
*MDF Online Writing Workshops: Lyra Logan, Esq.*, Vice President & General Counsel, FEF

*Closing Remarks: Dr. Lawrence Morehouse*

### **MARRIOTT TAMPA AIRPORT HOTEL**



LOBBY LEVEL



OFFICE LEVEL

## Saturday, June 15, 2013

7:00-8:30 a.m.

♦ **Room Checkout**

8:00-8:45 a.m. ~ *Grand Ballroom West Foyer*

♦ **Continental Breakfast**

9:00-10:00 a.m. ~ *Pinellas Room*

♦ **Session II: Negotiating the Ph.D. Environment**

This presentation describes key components of the academic department at the Ph.D. level and engages new McKnight Doctoral Fellows in a discussion of strategies that can be developed to successfully negotiate the Ph.D. environment.



The focus is on identifying challenges new doctoral students must face and respond to in addressing these challenges. The challenges include cultivating relations with faculty and choosing a major professor, connecting to the faculty's research enterprise, connecting course-work to research interests and dissertation development,

forming committees and responding to them at various stages, and gaining an understanding of the academic culture and its role in facilitating degree completion and career sponsorship.

- *Dr. Mohsen Milani*, Executive Director, USF World Center for Strategic and Diplomatic Studies and Professor, Department of Government and International Affairs, University of South Florida

10:10-12:00 p.m. ~ *Pinellas Room*

♦ **Graduate Deans' Roundtable**

*From the Graduate Deans' Perspective: Best Practices for Completing Your Ph.D. Program*

On this panel, selected Graduate Deans offer their advice on the most effective practices for completing the Ph.D. program.



- *Dr. Koren Bedeau*, Assistant Dean of the Graduate School, University of Miami

- *Dr. Keisha John*, Assistant Dean, Office of the Graduate School, Florida State University

- *Dr. David Mazyck*, Interim Associate Dean of the Graduate School, University of Florida

- *Dr. Sonja Montas-Hunter*, Assistant Dean of the Graduate School, Florida International University

- *Dr. Max Poole*, Senior Associate Dean of Graduate Studies, University of Central Florida

- *Dr. Verian Thomas*, Interim Assistant Vice President for Research & Dean for Graduate Studies, Florida A&M University

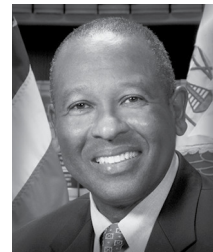
12:00-12:10 p.m.

♦ **Break**

12:10-1:30 p.m. ~ *Duval Room*

♦ **Luncheon: The Ph.D. Experience: Expectations and Realities**

- *Dr. Max Rony François*, Director of Public Health Services, Naval Health Clinic, Corpus Christi, Texas



*Max Rony François, M.D., Ph.D., is currently the Director of Public Health Services at the Naval Health Clinic in Corpus Christi, Texas. His previous positions have included Director of Public Health and State Health Officer (Georgia); Assistant Secretary of the Louisiana Office of Public Health; Assistant Professor in the Colleges of Medicine and Public Health, University of South Florida; Vice President of Administration of USF Health (Tampa); and, perhaps most notably, Secretary of the Florida Department of Health from 2005 to 2007. He earned his M.A. in Exercise Physiology from the University of Central Florida and his M.D., M.P.H., and Ph.D. (Toxicology/Public Health) from USF. He also holds a medical device patent. Dr. François is the recipient of numerous awards including the Presidential Meritorious Award from the Association of State and Territorial Health Officials, Outstanding New American Award from Catholic Charities Legal Services, Outstanding Leadership of a Faculty Advisor (USF), induction into the UCF Athletics Hall of Fame, and several alumni awards from USF, UCF, and Tallahassee Community College.*

## Saturday, June 15, 2013

1:45-3:00 p.m.

### ♦ Introduction to Graduate Writing

Writing in graduate school presents a number of opportunities and challenges. This session addresses a variety of types of writing students will experience in graduate school, including book reviews, critiques, literature reviews, annotated bibliographies, research papers and proposals, among others. In addition, the session addresses the need for students to familiarize themselves with scholarly journals in their fields, along with writing styles and documentation specific to their disciplines. The session also identifies typical writing problems that occur in students' writing and provides references to remedy the weaknesses.



### BUSINESS, EDUCATION, HUMANITIES, SOCIAL SCIENCES ~ Pinellas Room

- Dr. Elizabeth Metzger, Associate Professor, Department of English, University of South Florida

- Dr. Vernetta Williams, Visiting Professor, Department of English, University of South Florida

### STEM ~ Sarasota Room

- Dr. Sylvia Holladay, Visiting Professor, Department of English, University of South Florida

3:10-4:20 p.m. ~ Pinellas Room

### ♦ MDF Panel: The University Experience

The McKnight Doctoral Fellows' Panel has long been a New Fellows' Orientation highlight. Matriculating Fellows share their experiences and insights on selected topics to help prepare new Fellows for their upcoming Ph.D. experiences.

- Dr. Cyndia Morales (2008, Education, UCF), **Chair**, "*The Unwritten Rules of the Ph.D.*"

- Mr. Pablo Cornejo-Warner (2012, Electrical Engineering, USF): "*Essentials of Effective Time Management*"

- Mr. Jon Perdue (2010, Political Science, UF): "*The Importance of Mentoring*"

- Ms. Hadassah St. Hubert (2011, History, UM): "*Preparing for the First 18 Months of Your Ph.D. Program*"



4:30-5:00 p.m. ~ Pinellas Room

### ♦ Closing Session

*Business Matters/Policies & Procedures*  
*Meeting Adjournment*