

FLORIDA EDUCATION FUND

RESEARCH THAT IMPACTS POLICY AND PRACTICE

February 27-28, 2015

Tampa Airport Marriott Hotel
4200 George J. Bean Parkway, Tampa, FL 33607

*Lawrence Morehouse, Ph.D.
President and CEO
Convener*

Friday, February 27, 2015

To assist you in finding meeting rooms, we include a map of the Tampa Airport Marriott Hotel on page 2.

12:00 P.M. ~ Grand Ballroom Foyer

REGISTRATION

1:00 - 2:20 P.M. ~ Grand Ballroom East

SESSION 1

Writing the Prospectus and Dissertation

- **Dr. Marvin Dawkins**, Professor, Department of Sociology, University of Miami
- **Dr. Mohsen Milani**, Executive Director, USF World Center for Strategic and Diplomatic Studies and Professor, Department of Government and International Affairs, University of South Florida

2:30 - 3:45 P.M. ~ Sarasota Room

SESSION 2

How to Prepare for the Comprehensive Exam

- **Dr. Iraida Carrion**, Associate Professor, School of Social Work, University of South Florida
- **Dr. Sylvia Thomas**, Assistant Professor, Department of Electrical Engineering, University of South Florida

3:55 - 5:25 P.M.

SESSION 3

Achieving Precision, Coherence, and Clarity in Academic Writing

Business, Education, Humanities, Social Sciences ~ Sarasota Room

- **Dr. Elizabeth Metzger**, Associate Professor, Department of English, University of South Florida
- **Dr. Vernetta Williams**, Assistant Professor, Department of English, University of South Florida

STEM ~ Collier Room

- **Dr. Sylvia Holladay**, Professor, Department of English, Hillsborough Community College

6:30 - 9:00 P.M. ~ Grand Ballroom West

DINNER & ENTERTAINMENT

Alfred Sheppard Duo



MDF TIPS

- Please note tips on writing for publication presented throughout the program book.

Saturday, February 28, 2015

8:00 A.M. ~ Grand Ballroom Foyer

REGISTRATION/BREAKFAST

8:45 - 9:05 A.M. ~ Grand Ballroom East

OPENING SESSION

Introduction of Discussants

- **Dr. Lawrence Morehouse**, President and CEO, FEF

9:15 - 10:30 A.M. ~ Santa Rosa Room

PANEL 1 — HUMANITIES I

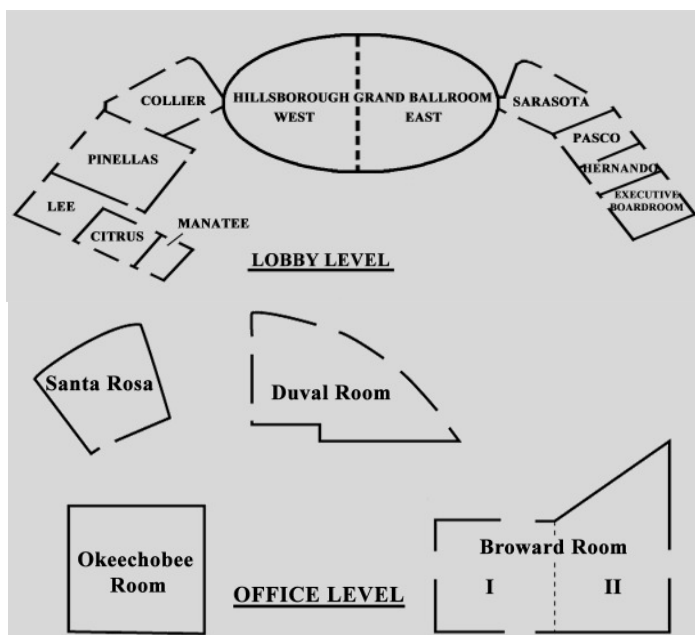
- **Monica Duran**, Panel Chair, UM (2010), Spanish Literature, “*Visual Narratives and Metaphors as Tools for Teaching in the Foreign Language Classroom: A Sociocultural and Critical Perspective*”
- **Ariana Magdaleno**, UM (2009), Romance Studies, “*A Turn-of-the-Century Lens of Mexicanidad in the 2002 film Japón*”
- **Catalina Ramirez**, UM (2008), Romance Studies, “*Contemporary Central American Musical Imaginaries*”

Discussants (15 minutes)

- **Dr. Christine Arce**, Assistant Professor, Department of Modern Languages, University of Miami
- **Dr. Genyne Boston**, Professor, Department of English, Florida A&M University

Audience – Q&A (10 Minutes)

Tampa Airport Marriott



9:15 - 10:30 A.M. ~ Lee Room

PANEL 2 — HEALTH & MEDICAL SCIENCES I

- **June Carrington**, Panel Chair, UF (2009), Anthropology, “*The Affordable Care Act and its Impact on Women’s and Physicians’ Breast Cancer Experiences in Puerto Rico*”
- **Toya Albury**, UCF (2010), Biomedical Sciences, “*Diabetes-Like Symptoms in Transgenic Pancreatic Cancer Mouse Models*”
- **Jana Miles**, FAMU (2012), Pharmacy, “*Effect of Aldehydes in Anthracycline Cytotoxicity in *S. Cerevisiae**”

Discussants (15 minutes)

- **Dr. Diane Allen-Gipson**, Assistant Professor, Department of Pharmaceutical Sciences, University of South Florida
- **Dr. Ernest Amankwah**, Epidemiologist, Clinical and Translational Research Organization, All Children’s Hospital, Johns Hopkins Medicine; and Assistant Professor, Department of Pediatrics, Johns Hopkins University School of Medicine
- **Dr. Cheryl Vamos**, Assistant Professor and Associate Director, Center for Transdisciplinary Research in Women’s Health, Department of Community and Family Health, University of South Florida

Audience – Q&A (10 Minutes)

9:15 - 10:30 A.M. ~ Pinellas Room

PANEL 3 — ENGINEERING I

- **Victor Huayamave**, Panel Chair, UCF (2014), Mechanical & Aerospace Engineering, “*Mechanics of Hip Dysplasia Reduction in Infants with the Pavlik Harness Using Patient-Specific Geometry*”
- **Mark Santana**, USF (2014), Civil & Environmental Engineering, “*The Effect of Smart Growth on Water Supply*”
- **Carlos Velez**, UCF (2014), Mechanical & Aerospace Engineering, “*The Tabulated Premixed Conditional Moment Closure Model with Large Eddy Simulations of an Enclosed Turbulent Lean Premixed Methane Flame*”

Discussants (15 minutes)

- **Dr. Fernando Gonzalez**, Assistant Professor, Department of Bioengineering, Florida Gulf Coast University
- **Dr. Claude Villiers**, Associate Professor, Department of Civil Engineering, Florida Gulf Coast University

Audience – Q&A (10 Minutes)

9:15 - 10:30 A.M. ~ Sarasota Room

PANEL 4 — EDUCATION

- **Natalie King, Panel Chair**, UF (2012), Education, “*African American Middle School Girls in Informal Spaces: Revealing Their Luster Toward STEM Learning*”
- **Orlando Pizana**, USF (2009), Education, “*Strategies for Improving English Writing Proficiency Amongst College Football Athletes Based Upon Student Athlete Perceptions and Opinions*”
- **Nefertiti Puplampu-Gaudig**, FSU (2012), Education, “*Academia Meets Web 2.0: An Analysis of the Existence and Composition of Social Media Policy at United States Research Institutions of Higher Education*”
- **Jessica Wilson**, USF (2014), Education, “*Mentor-Service Learning Model: A Response to Underrepresented Student Populations in STEM*”

Discussants (15 minutes)

- **Dr. Shelby Gilbert**, Assistant Professor, College of Education, Florida Gulf Coast University
- **Dr. Sonja Montas-Hunter**, Associate Dean of the Graduate School, Florida International University

Audience – Q&A (10 Minutes)

9:15 - 10:30 A.M. ~ Broward Room

PANEL 5 — HISTORY & INTERNATIONAL STUDIES

- **Nathalia Borden, Panel Chair**, FSU (2011), International Studies, “*When Youth Rise: Youth Bulges, Protest and Revolution*”
- **Carlos Hernandez**, UF (2012), History, “*Myths of Mestizaje: Race and Nation in Nineteenth-Century Mexico*”

Discussant (15 minutes)

- **Dr. Natanya Duncan**, Assistant Professor, Department of History & Geography, Morgan State University

Audience – Q&A (10 Minutes)

9:15 - 10:30 A.M. ~ Pasco Room

PANEL 6 — PSYCHOLOGY I

- **Carmen Edwards**, UF (2010), Psychology
- **Virginia Alfonso**, UM (2009), Psychology, “*The Other Side: A Closer Look at Immigration-Related Parent-Child Separations and the Process of Reunification in Hispanic Families*”
- **Shannon Chiles**, UM (2012), Psychology, “*Assessing the Dietary Behavior of Middle School Girls*”
- **Amber Kinsey**, FSU (2014), Nutrition, Food & Exercise Science, “*Nighttime Eating: What Do We Know About Eating Before Bed?*”

Discussants (15 minutes)

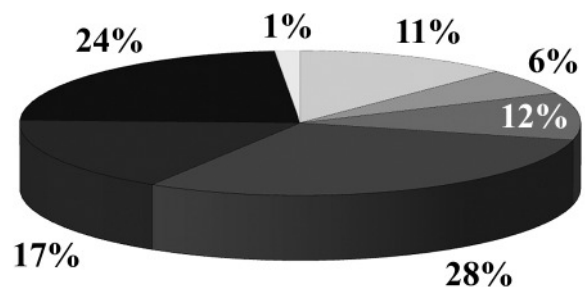
- **Dr. Nicole Whitehead**, Assistant Professor, Department of Clinical and Health Psychology, University of Florida
- **Dr. Brenda Wiens**, Clinical Assistant Professor, Department of Clinical and Health Psychology, University of Florida

Audience – Q&A (10 Minutes)



MDF QUICK STATS

454 MDF Graduates



Discipline Breakdown

- Business (52)
- Education (26)
- Humanities (54)
- Social Sciences (129)
- STEM-Engineering/Computer Sciences (79)
- STEM-Health/Life/Physical Sciences (108)
- STEM-Mathematics/Statistics (6)

Saturday, February 28, 2015

9:15 - 10:30 A.M. ~ Collier Room

PANEL 7 — SOCIOLOGY

- **Micah Johnson, Panel Chair**, UF (2013), Sociology, “*The Social Geometry of Youth Violence*”
- **Julia Arroyo**, UF (2014), Sociology, “*Gendered Impacts?: (Non-)Parental Living Arrangements & First Birth Timing*”
- **Joseph Rivera**, UF, Sociology, “*Turning on the Lights: A Criminological Approach to Studying Insider Trading*”

Discussants (15 minutes)

- **Dr. Simone O’Bryan**, Assistant Professor, Department of Sociology, Florida Gulf Coast University
- **Dr. Fernando Rivera**, Associate Professor, Department of Sociology, University of Central Florida
- **Dr. Barbara Zsembik**, Associate Professor and Chair, Department of Sociology and Criminology and Law, University of Florida

Audience – Q&A (10 Minutes)

10:40 - 11:55 A.M. ~ Lee Room

PANEL 8 — ENGINEERING II

- **Amaris Genemaras, Panel Chair**, UM (2014), Biomedical Engineering, “*Inflammatory Cytokines Induce Specific Time-Dependent MicroRNA Expression in Cells of Knee Soft Tissues*”
- **Corey Baker**, UF (2014), Computer & Electrical Engineering, “*Low Energy Socially Cognizant Routing for Mobile Community Ad-Hoc Social Networks*”
- **Ange Patricia Fiebre**, FIU (2012), Computer & Electrical Engineering, “*Uniquely Identifiable Tamper-Evident Device Using Coupling Between Subwavelength Gratings*”

Discussants (15 minutes)

- **Dr. Jorge Torres**, Associate Professor, Department of Bio-engineering, Florida Gulf Coast University
- **Dr. Claude Villiers**, Associate Professor, Department of Civil Engineering, Florida Gulf Coast University

Audience – Q&A (10 Minutes)

10:40 - 11:55 A.M. ~ Pinellas Room

PANEL 9 — PSYCHOLOGY II

- **Tanisha Hill-Jarret, Panel Chair**, UF (2011), Psychology
- **Larry Burrell**, UF (2013), Clinical Psychology, “*Effects of Cannabis Consumption on Verbal Fluencies*”
- **Jaylyn Clark**, UF (2013), Psychology, “*The Influence of Cues on Individual Pain Policies in Assessment and Treatment Decisions for Pediatric Chronic Pain Patients Using Virtual Human Technology*”
- **Allyson Diggins**, UF (2013), Psychology, “*Negative Mood & Quality of Life of African American Breast Cancer Survivors*”

Discussants (15 minutes)

- **Dr. Nicole Whitehead**, Assistant Professor, Department of Clinical and Health Psychology, University of Florida
- **Dr. Brenda Wiens**, Clinical Assistant Professor, Department of Clinical and Health Psychology, University of Florida

Audience – Q&A (10 minutes)

10:40 - 11:55 A.M. ~ Sarasota Room

PANEL 10 — POLITICAL SCIENCE

- **Ransford Edwards, Panel Chair**, FIU (2011), Political Science, “*From HOPE to HELP: Global Supply Chains and Haiti’s Apparel Assembly Industry*”
- **Dimmy Herard**, FIU, Political Science, “*Disaster and the Co-opting of the Democratic Imperative*”
- **Felix Jean Louis**, FIU, Political Science, “*Capitalizing on Goodwill: Ludovic Rosemond and Haitian Transnational Entrepreneurship, 1934-1938*”

Discussant (15 minutes)

- **Dr. Bernd Reiter**, Associate Professor and Graduate Director, Department of Government & International Affairs, University of South Florida

Audience – Q&A (10 minutes)

10:40 - 11:55 A.M. ~ Broward Room

PANEL 11 — HEALTH & MEDICAL SCIENCES II

- **Denise Vidot**, Panel Chair, UM (2011), Epidemiology
- **Felicia Griffin**, FSU (2014), Statistics, “*An Examination of the Concept of Frailty in the Elderly*”
- **Dr. Julieta Hernandez**, FIU (2013), Social Welfare, “*Maternal-Fetal Attachment and Health Behaviors Among Women with HIV/AIDS*”
- **Dudith Pierre-Victor**, FIU (2012), Public Health, “*Human Papillomavirus Vaccine Perception and Factors Influencing Vaccine Decision Among Haitian Female College Students*”

Discussants (15 minutes)

- **Dr. Diane Allen-Gipson**, Assistant Professor, Department of Pharmaceutical Sciences, University of South Florida
- **Dr. Ernest Amankwah**, Epidemiologist, Clinical and Translational Research Organization, All Children’s Hospital, Johns Hopkins Medicine; and Assistant Professor, Department of Pediatrics, Johns Hopkins University School of Medicine
- **Dr. Stacy Davis**, Postdoctoral Fellow, Department of Health Outcomes & Behavior, Moffitt Cancer Center
- **Dr. Umesh Jinwal**, Assistant Professor, Department of Pharmaceutical Sciences, University of South Florida

Audience – Q&A (10 Minutes)

10:40 - 11:55 A.M. ~ Pasco Room

PANEL 12 — PHYSICAL SCIENCES I

- **Jaired Tate**, Panel Chair, UF (2014), Chemistry, “*Spectroscopic Characterization of the Excited State Properties of Ruthenium Polypyridine Complexes*”
- **Candice Ulmer**, UF (2012), Chemistry, “*Untargeted Metabolomics and Lipidomics Workflows Type I Diabetes Biomarker Discovery using CD4⁺ T cells*”
- **Lenzi Williams**, FSU (2014), Chemistry, “*Plasmonic Nanoparticle Networks Formed Using Iron Porphyrin Bridges*”

Discussants (15 minutes)

- **Dr. Maurice Edington**, Dean, College of Science and Technology, Florida A&M University
- **Dr. Valeria Kleiman**, Associate Professor, Department of Chemistry, University of Florida

Audience – Q&A (10 Minutes)

10:40 - 11:55 A.M. ~ Collier Room

PANEL 13 — AGRICULTURE

- **Rosalyn Johnson**, Panel Chair, UF (2014), Wildlife Ecology, “*Native Bee Diversity and Pollen Foraging Activities on Produce Farms in Northern Florida*”
- **Nia Haynes**, UF (2011), Wildlife Ecology, “*Barriers and Opportunities Addressed by Diversity Focused Natural Resource Internship Programs: A Case Study*”

Discussant (15 minutes)

- **Dr. Sally Williams**, Associate Professor, Department of Animal Sciences, University of Florida

Audience – Q&A (10 Minutes)

10:40 - 11:55 A.M. ~ Santa Rosa Room

PANEL 14 — HUMANITIES II

- **Janelle Jennings-Alexander**, Panel Chair, FSU (2011), English, “*Looking for Home in All the Wrong Places: Redefining Homespace for Blacks Through a Reading of Toni Morrison’s Home*”
- **Tiffany Lang**, UF (2008), Interior Design, “*Historic Character: Investigating the Authentic Architectural Identity of St. Croix, U.S. Virgin Islands, through Investigations of the Application of Historic Color Schemes*”
- **Esther Spencer**, FSU (2012), Literature, “*Sun Smacking: Healing Trauma Through the Reconstruction of an African Past*”

Discussants (15 minutes)

- **Dr. Christine Arce**, Assistant Professor, Department of Modern Languages, University of Miami
- **Dr. Genyne Boston**, Professor, Department of English, Florida A&M University
- **Dr. Robin Brooks**, Postdoctoral Fellow, Department of English, University of South Florida

Audience – Q&A (10 Minutes)

Saturday, February 28, 2015

10:40 - 11:55 A.M. ~ Hernando Room

PANEL 15 — CRIMINOLOGY

- **Danielle Tolson**, Panel Chair, UF (2009), Criminology, “*The Role of Race and Context in Understanding Stigmatization of Sex Offender Exonerees*”
- **Miltonette Craig**, FSU (2013), Criminology, “*The (Counter) Productivity of Order-Maintenance Policing*”
- **Andrea Headley**, FIU (2013), Public Affairs, “*Does Race Really Matter in ‘Stand Your Ground’ Outcomes?*”
- **Cresean Hughes**, FSU (2010), Criminology, “*Racial Threat and Its Influence on Punishment Outcomes for Florida High School Students*”

Discussants (15 minutes)

- **Dr. Tony Barringer**, Associate Provost and Associate VP for Faculty Affairs, Office of Academic Affairs, Florida Gulf Coast University
- **Dr. Simone O’Bryan**, Assistant Professor, Department of Sociology, Florida Gulf Coast University
- **Dr. Barbara Zsembik**, Associate Professor and Chair, Department of Sociology and Criminology and Law, University of Florida

Audience – Q&A (10 Minutes)

12:00 - 1:50 P.M. ~ Grand Ballroom West

LUNCHEON & PRESENTATIONS

- **Amber Kinsey**, FSU (2014), Nutrition, Food & Exercise Science, “*Nighttime Eating: What Do We Know About Eating Before Bed?*”
- **Mark Santana**, USF (2014), Civil & Environmental Engineering, “*The Effect of Smart Growth on Water Supply*”



MDF WRITING TIP

- When writing a journal article, shift gears from student to authority on your subject. Your literature review should contain essential resources, but it doesn’t have to be exhaustive. Avoid too much repetition. You don’t have to announce and summarize each point as in a dissertation. Include recent, relevant research; state your insights; and accept responsibility for your assertions.

2:00 - 3:30 P.M. ~ Sarasota Room

PANEL 16 — ANTHROPOLOGY

- **Camee Maddox**, Panel Chair, UF (2014), Anthropology, “*Drum, Dance, and the Defense of Cultural Citizenship: A Case Study of Bèlè’s Rebirth in Contemporary Martinique*”
- **Candy Hurtado**, FAU (2013), Comparative Studies, “*The Subaltern Speaks: Dance as Performative Mimicry in the Central Peruvian Andes, the Case of the Tunantada of Jauja*”

Discussants (15 minutes)

- **Dr. Simone O’Bryan**, Assistant Professor, Department of Sociology, Florida Gulf Coast University
- **Dr. Fernando Rivera**, Associate Professor, Department of Sociology, University of Central Florida

Audience – Q&A (10 Minutes)

2:00 - 3:30 P.M. ~ Broward Room

PANEL 17 — MARINE SCIENCES

- **Adrienne George**, Panel Chair, USF (2011), Marine Science
- **Chanda Littles**, UF (2011), Biology, “*Manatees and Submersed Aquatic Vegetation in Coastal Florida*”
- **Jame McCray**, UF (2009), Biology/Marine Science, “*Sea Turtle Friendly Lighting in Florida: Understanding the Policy Implementation and Enforcement Process*”

Discussant (15 minutes)

- **Dr. Sennai Habtes**, Research Associate, Stock Assessment Program, Florida Fish and Wildlife Conservation Commission

Audience – Q&A (10 Minutes)

2:00 - 3:30 P.M. ~ Pasco Room

PANEL 18 — BUSINESS

- **Oscar Harvin**, Panel Chair, FAU (2011), Accounting, “*The Moderating Effect of an Auditor’s Need for Closure*”
- **Reginald Harris**, FSU, Business Administration, “*Does Location Predict Which Universities Receive Corporate Donations?*”
- **Rebeca Perren**, UCF (2012), Business, “*Assembling Peers: Advancing a Typological Theory of Collaborative Consumption Markets*”

Discussant (15 minutes)

- **Dr. Bruce Lamont**, Thomas L. Williams Eminent Scholar in Strategic Management, Florida State University

Audience – Q&A (10 Minutes)

2:00 - 3:30 P.M. ~ Hernando Room

PANEL 19 — PHYSICAL SCIENCES II

- **Ophelia George**, Panel Chair, USF (2014), Geosciences, “*Improving Seismic Event Locations on Dominica Using the hypodd Algorithm to Enhance Volcanic Hazard Assessments*”
- **Sarah Mena**, UF (2012), Chemical Engineering, “*Parameters Affecting the Localized Fluidization in a Particle Medium*”

Discussants (15 minutes)

- **Dr. Maurice Edington**, Dean, College of Science and Technology, Florida A&M University
- **Dr. Valeria Kleiman**, Associate Professor, Department of Chemistry, University of Florida

Audience – Q&A (10 Minutes)



MDF WRITING TIP

- Set a goal to write at least 15 minutes every day. It will generate material and improve your writing. Know that a successful writing session may consist of producing one true sentence. Keep unused material for possible later use.

2:00 - 3:30 P.M. ~ Santa Rosa Room

PANEL 20 — HEALTH & MEDICAL SCIENCES III

- **Adonis McQueen**, Panel Chair, USF (2014), Molecular Medicine, “*Synthesis and in vitro Activity of a Fluorescent Primaquine Probe*”
- **Phaedra Thomas**, USF (2009), Public Health, “*Phenotypic Characterization of the Plasmodium falciparum NOT1 (PF3D7_1103800) Gene Knockout and Heat Shock Analysis of the piggyBac Mutant Library*”
- **Karessa White**, UF (2012), Communication Sciences & Disorders, “*The Role of Mitochondrial Isocitrate Dehydrogenase 2 in Age-Related Hearing Loss in Mice*”

Discussants (15 minutes)

- **Dr. Diane Allen-Gipson**, Assistant Professor, Department of Pharmaceutical Sciences, University of South Florida
- **Dr. Tyisha Hathorne**, Associate Director, Graduate Minority Programs, University of Florida
- **Dr. Umesh Jinwal**, Assistant Professor, Department of Pharmaceutical Sciences, University of South Florida
- **Dr. Maj-Linda Selenica**, Assistant Professor, Department of Pharmaceutical Sciences, University of South Florida

Audience – Q&A (10 Minutes)

3:40 - 4:00 P.M. ~ Grand Ballroom East

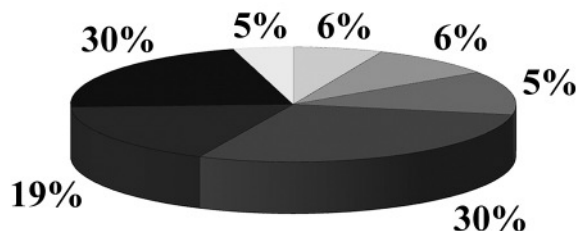
CLOSING REMARKS

- **Dr. Lawrence Morehouse**, President & CEO, FEF



MDF QUICK STATS

354 Current MDF Matriculants



Discipline Breakdown

- Business (20)
- Education (20)
- Humanities (18)
- Social Sciences (105)
- STEM-Engineering/Computer Sciences (67)
- STEM-Health/Life/Physical Sciences (107)
- STEM-Mathematics/Statistics (17)